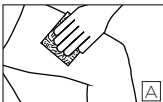


# Dale®

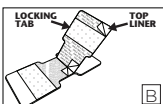
## Hold-n-Place® Foley Catheter Adhesive Patch

### Application Instructions

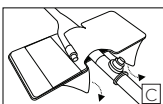
1. Clean and prepare application area. **(A)**



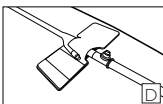
2. Open Dale Hold-n-Place to expose center liners. **(B)**



3. Remove center liners and place urinary catheter onto exposed adhesive. **(B)**



4. Wrap the locking tab beyond the lumen of the catheter, where the drainage bag connects. You may remove the top liner for extra securement. **(C)**



5. Remove base liners to expose adhesive and apply to skin. **(C)**

6. Dale Hold-n-Place should appear as shown in figure D when securement is complete. **(D)**

### Change

Every 3 days or sooner if necessary.

### Removal

Device should be removed with care to avoid skin trauma.

### Additional Benefits

The locking tab may be lifted to reposition the tube.

#### **For single patient use. Disposable.**

For an application video please visit [www.dalemed.com](http://www.dalemed.com)

Dale medical products are available from your preferred hospital/medical supply dealer.

#### **Not made with natural rubber latex.**

Dale® & Hold-n-Place® are registered trademarks of Dale Medical Products, Inc. in the USA.



Dale Medical Products, Inc.  
40 Kenwood Circle • Suite 7  
Franklin, MA 02038-3298  
T: 508-695-9316



**MDSS GmbH**  
Schiffgraben 41  
D-30175 Hannover, Germany

